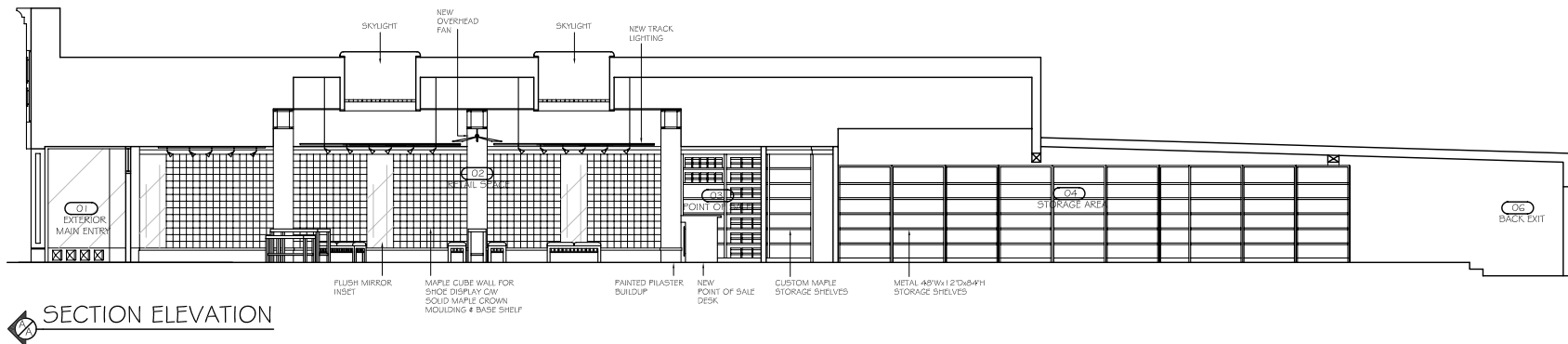


Copyright reserved. The design and related documents are the exclusive property of ROOT Design. They are for the use of the project and cannot be used for any other purpose without the prior written consent of ROOT Design. These documents are not valid for construction unless stamped "Issued for Construction" by ROOT Design. Prior to commencement of the Work, the Contractor shall coordinate and verify all field measurements and field conditions; product requirements; code requirements and other data and shall check and coordinate each document with the requirements of the Work and of the Contract Documents. The Contractor shall identify any errors and omissions and coordinate any discrepancies between the drawings and the Work and Contract Documents and bring these items to the attention of ROOT Design for clarification. Written dimensions shall take precedence over scaled dimensions.

Revisions

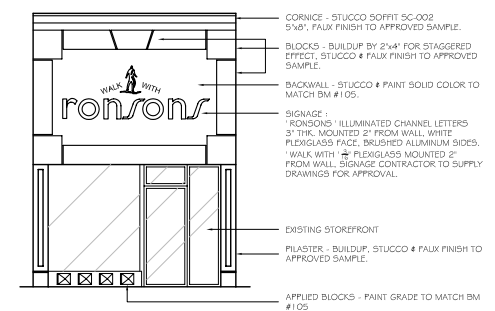
No.	Description



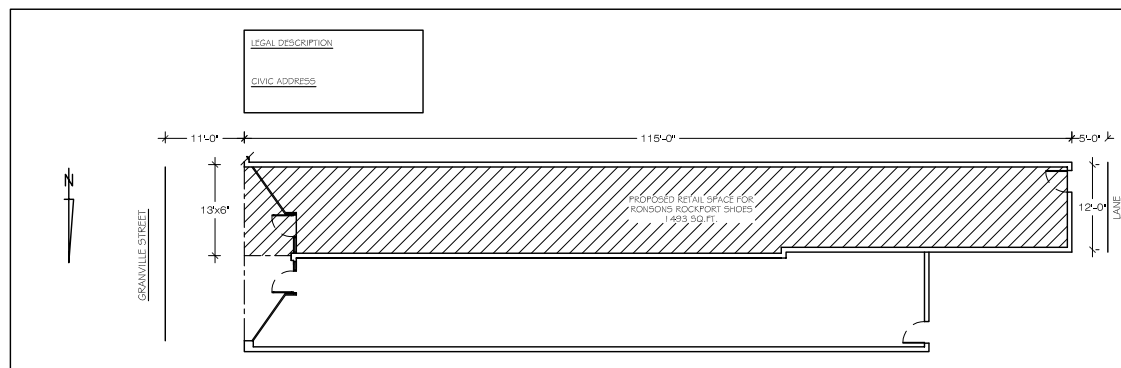
Project
RONSONS ROCKPORT SHOES
 Vancouver, BC

Sheet Title
KEY PLAN, FINISHES PLAN, SECTION ELEVATION & EXTERIOR FRONT ELEVATION

SECTION ELEVATION



EXTERIOR FRONT ELEVATION

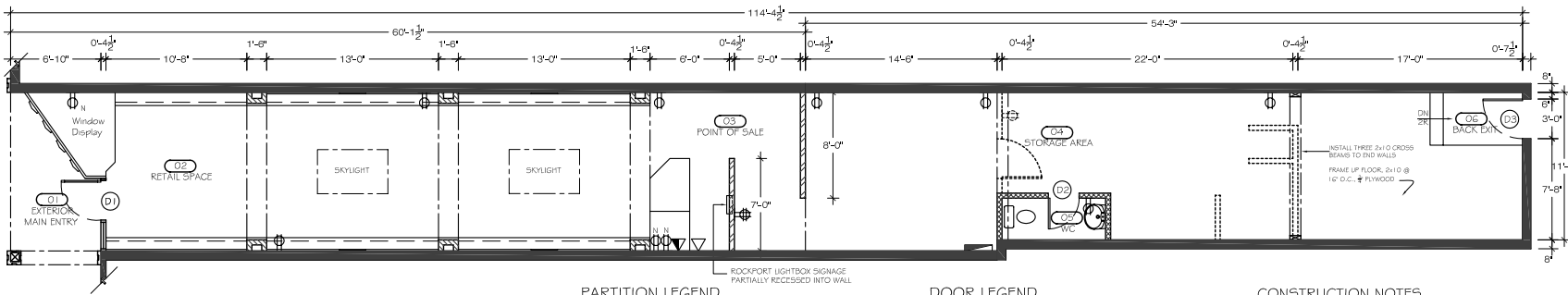


KEY PLAN
 SCALE 1/8" = 1'-0"

Date JULY 2006
Scale 1/4" = 1'-0"
Drawn By CMR

ROOT Design
 tel 604 465 3862
 carole@rootdesign.ca

Sheet Number
ID-1



CONSTRUCTION / ELECTRICAL PLAN

PARTITION LEGEND

- EXISTING BASE BUILDING DEMISING WALLS
PATCH AND MAKE GOOD AS REQUIRED FOR NEW TENANT FINISHES PATCH AND REPAIR ALL PENETRATIONS AT BASE BUILDING DEMISING WALLS AND CEILINGS AS REQUIRED BY CODE
- TYPE 1 PARTITION:
10'-0" H TO US OF GWB CEILING
5/8" GWB TO BOTH SIDES OF 3 5/8" STEEL STUDS AT 16" O/C
CW R-8 FIBER GLASS NOISE STOP BLANKET TO ALL STUD VOIDS
- TYPE 2 PARTITION:
11'-4" H - EXTEND 34" ABOVE 8'-6" H T-BAR CEILING HEIGHT
5/8" GWB TO BOTH SIDES OF 3 5/8" STEEL STUDS AT 16" O/C
CW R-8 FIBER GLASS NOISE STOP BLANKET TO ALL STUD VOIDS
- TYPE 3 PARTITION:
8'-6" H - EXTEND TO 7'-6" H T-BAR CEILING HEIGHT
5/8" GWB TO BOTH SIDES OF 3 5/8" STEEL STUDS AT 16" O/C
CW R-8 FIBER GLASS NOISE STOP BLANKET TO ALL STUD VOIDS
- WALLS TO BE DEMOLISHED
- PROVIDE WALL BACKING AS PER DETAIL BOOKLET, DENTAL EQUIPMENT SPECIFICATIONS

DOOR LEGEND

- (D1) 3'-0" x 7'-0" x 1.3M² EXISTING ALUMINUM STOREFRONT ENTRY DOOR CW 2'-0" x 7'-0" SIGHTLIT DOOR IS DEADLOCKED KEVED TO BUILDING MASTER
- (D2) 2'-0" x 7'-0" x 1.3M² NEW SOLID CORE PAINT GRADE SLAB DOOR CW PAINT GRADE FRAME AND CASING CW PRIVACY SET
- (D3) 3'-0" x 6'-8" x 1.3M² EXISTING PAINTED METAL SLAB DOOR CW PAINTED PRESSED STEEL FRAME & LATCH BOLT DOOR TO BE REFINISHED AS PER SPECIFICATION BOOKLET

POWER / VOICE / DATA LEGEND

- WALL MOUNTED DUPLEX RECEPTACLE
- WALL MOUNTED FOURPLEX RECEPTACLE
- COMBINED WALL MOUNTED VOICE / DATA OUTLET
- TELEPHONE CABLE
- ELECTRICAL PANEL

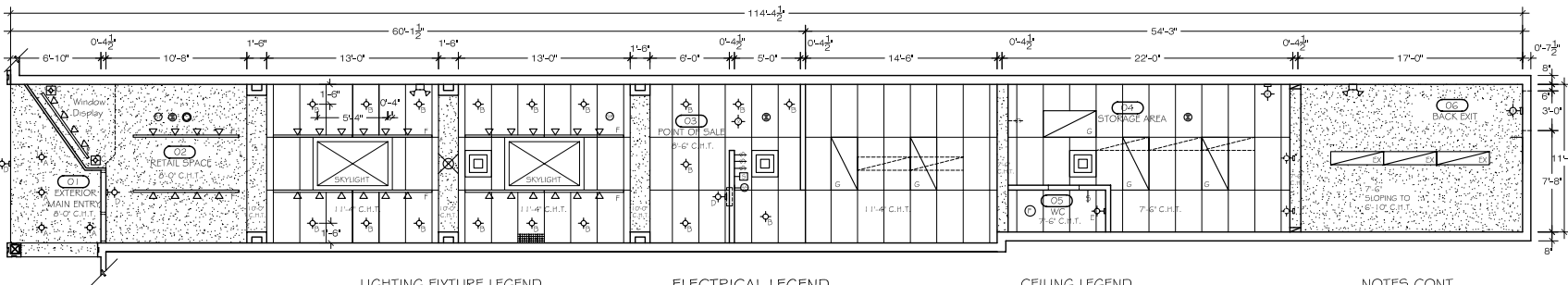
CONSTRUCTION NOTES

- ALL WORK FOR THIS PROJECT IS TO CONFORM TO THE REQUIREMENTS OF THE LATEST EDITION OF THE CITY OF VANCOUVER BUILDING BY-LAW AND ALL OTHER APPLICABLE CODES AS SET OUT BY THE AUTHORITY HAVING JURISDICTION.
- REFER TO DETAIL BOOKLET FOR ALL RELATED WORK.
- THE TRADES ARE TO REVIEW ALL SITE CONDITIONS AND DIMENSIONS AND ADVISE THE DESIGNER OF ALL DISCREPANCIES.
- THE TRADES SHALL CARRY OUT DAILY SITE CLEAN UPS AND MUST KEEP ALL PUBLIC AND EXIT CORRIDORS CLEAR OF ALL CONSTRUCTION MATERIALS AND DEBRIS AT ALL TIMES.
- THE DESIGNER IS TO APPROVE THE WALL TRACK LAYOUT PRIOR TO THE SETTING OF THE TRACK.
- INSTALLATION OF BACKING MUST BE INSPECTED AND APPROVED BY THE DESIGNER PRIOR TO INSTALLATION OF GWB.
- INSTALLATION OF FIBRE GLASS NOISE STOP BLANKET TO ALL STUD VOIDS MUST BE INSPECTED AND APPROVED BY THE DESIGNER PRIOR TO INSTALLATION OF GWB.

Copyright reserved. The design and related documents are the exclusive property of ROOT Design. They are for the use of the project and cannot be used for any other purpose without the prior written consent of ROOT Design. These documents are not valid for construction unless stamped "Issued for Construction" by ROOT Design. Prior to commencement of the Work, the Contractor shall coordinate and verify all field measurements and field conditions, product requirements, coding numbers and other data and submittals and coordinate each document with the requirements of the Work and of the Contract Documents. The Contractor shall identify any errors and omissions and advise any discrepancies between the drawings and the Work and Contract Documents and bring these items to the attention of ROOT Design for clarification. When dimensions shall take precedence over scaled dimensions.

Revisions

No.	Description



REFLECTED CEILING PLAN

LIGHTING FIXTURE LEGEND

- POT LIGHT FOR EXTERIOR
- POT LIGHT; ADJUSTABLE HALOGEN
- FLOOR MOUNTED UPLIGHT; HALOGEN MONOPONT
- WALL MOUNTED HARDWARE LOCATION FOR SIGNAGE LIGHTING
- WALL MOUNTED WALL SCONCE
- TRACK LIGHT ON EXTENDED RODS FROM CEILING; 75 WATT NARROW SPOT; HALOGEN LAMP; BLACK FINISH
- RECESSED FLUORESCENT FIXTURE; 2'-0" x 4'-0"
- EXISTING 1/4" RECESSED FLUORESCENT FIXTURES
- REMOVE 1/4" RECESSED FLUORESCENT FIXTURES
- REMOVE EXISTING WALL SCONCES
- WALL MOUNTED EXIT LIGHT
- CEILING MOUNTED EXIT LIGHT
- EMERGENCY LIGHTS

ELECTRICAL LEGEND

- SPEAKER
- STEREO CONTROL LOCATION
- SMOKE DETECTOR
- SECURITY KEYPAD
- WALL SWITCH

MECHANICAL LEGEND

- CEILING MOUNTED FAN
- DUCTED FAN
- 8" DIA DIFFUSER
- 8" x 2'-0" RECESSED CEILING AIR RETURN
- 2'-0" x 2'-0" RECESSED CEILING DIFFUSER

CEILING LEGEND

- NEW GWB BULKHEADS AND CEILINGS:
ALL GWB CEILING AND BULKHEADS TO BE 5/8" GWB ON 2 1/2" STEEL STUD METAL SUSPENSION FRAMING SYSTEM REFER TO FINISHES PLAN FOR FINISH TYPE AND SPECIFICATIONS.
- 2'-0" x 4'-0" x 7/8" ACOUSTICAL CEILING TILE ON STANDARD SUSPENDED 1 5/16" T-BAR SYSTEM.

NOTES

- ALL WORK FOR THIS PROJECT IS TO CONFORM TO THE REQUIREMENTS OF THE LATEST EDITION OF THE CITY OF VANCOUVER BUILDING BY-LAW AND ALL OTHER APPLICABLE CODES AS SET OUT BY THE AUTHORITY HAVING JURISDICTION.
- ALL OUTLETS AND COVERPLATES TO MATCH EXISTING DETAILS - IVORY CW STAINLESS STEEL COVERPLATES.
- REFER TO DETAIL SHEETS FOR ALL RELATED WORK.
- APPLICABLE TRADES SHALL RETAIN THE SERVICES OF A PROFESSIONAL SEISMIC ENGINEER TO PROVIDE LETTERS OF ASSURANCE FOR ALL CEILING SUSPENDED ITEMS: MECHANICAL / ELECTRICAL / T-BAR SYSTEM.

NOTES CONT.

- THE MECHANICAL CONTRACTOR IS TO INCLUDE FOR:
 - DESIGN / BUILD SERVICES FOR THE PROJECT.
 - ALL ITEMS AS REQUIRED, INCLUDING FIXTURES, PANEL SWITCHING, DIFFUSERS, THERMOSTAT, RETURN AIR GRILLES, EXHAUST FANS, SEISMIC RESTRAINTS, FIRE STOPPING, FIRE DAMPERS, AIR BALANCING CW REPORT, SHOP DRAWINGS, MAINTENANCE MANUALS, AS BUILTS, ETC.
 - FOR A COMPLETE INSTALLATION, THIS IS NOT A SPRINKLERED BUILDING. (ALL LOCATIONS ARE TO BE CONFIRMED BY THE DESIGNER ON SITE).
- THE ELECTRICAL CONTRACTOR IS TO INCLUDE FOR:
 - DESIGN / BUILD SERVICES FOR THE PROJECT.
 - ALL ITEMS AS REQUIRED, INCLUDING FIXTURES, PANEL SWITCHING, EXIT SIGNS, EMERGENCY LIGHTING, SMOKE DETECTORS, FIRE ALARM VERIFICATION CW REPORT, FIRE EXTINGUISHER, SEISMIC RESTRAINTS, FIRE STOPPING, SHOP DRAWINGS, MAINTENANCE MANUALS, AS BUILTS, ETC.
 - FOR A COMPLETE INSTALLATION, (ALL LOCATIONS ARE TO BE CONFIRMED BY THE DESIGNER ON SITE).

Project

RONSONS ROCKPORT SHOES
Vancouver, BC

Sheet Title

CONSTRUCTION / ELECTRICAL PLAN
REFLECTED CEILING PLAN

Date

JULY 2006

Scale

1 / 4" = 1'-0"

Drawn By

CMR

ROOT Design

tel 604 465 3862
carole@rootdesign.ca

Sheet Number

ID-2